

Industrial Din Rail UPS

Datasheet



Alpha Power Din Rail UPS combines easy operating design, multi-function operation and supports power protection on industrial equipment.

Key features include:

- Light weight and compact industrial design
- Din rail mounting design
- Remote on-off control
- Cold start capability
- Surge, overload, short circuit protection
- RJ45 / RJ11 Tel-communication protection
- RS232 Communication Port
- SNMP card / Modbus card / Dry Contact Relay Box (option)

Applications include:

- Factory automation control system
- Robotic machine
- Conveying equipment

Alpha Power Systems

Unit 18, 30 Heathcote Road
Moorebank NSW 2170

T (02) 9602 8331

F (02) 9602 9180

E admin@alphapower.com.au

W www.alphapower.com.au

Front Panel

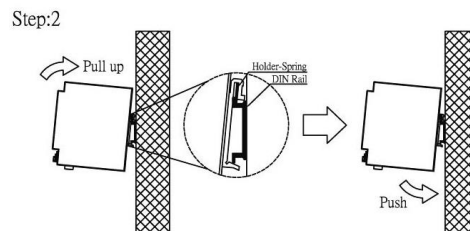
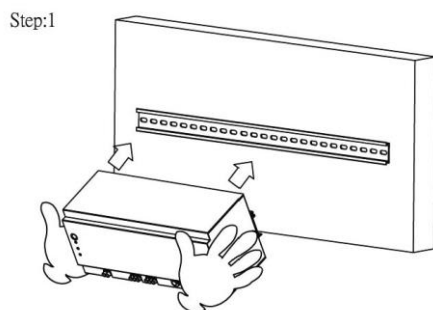


1. Power On-Off and Test Button
2. LED Indicators
Red – Battery warning or Overload
Yellow – On battery mode
Green – AC input
3. Aux DC output
4. Remote on / off connectors
5. Input / Output screw connectors
6. Input circuit breaker
7. RS232 communication port

8. RJ45 / RJ11 Tele-communication Protection
9. Optional: SNMP card / Modbus card / Dry contact relay box



Mounting



Product Specifications

Model	DRU-500	DRU-850
Configuration		
Capacity	500VA , 300W	850VA , 510W
Form	Din Rail Mounting Type	
Input		
Voltage	100 / 110 / 120 Vac or 220 / 230 / 240 Vac	
Input Voltage Range	85 – 138 or 165 – 276 Vac	
Input Frequency Range	50 Hz / 60 Hz (Auto Sensing)	
Output		
Waveform	Simulated Sine Wave	
Voltage	100 / 110 / 120 Vac or 220 / 230 / 240 Vac	
Frequency	50Hz / 60Hz ± 3Hz	
Transfer Time	2 – 4 ms (Typical)	
Protection		
Full Protection	Overload , Surge , Short Circuit	
Tele-communication	RJ11 / RJ45	
Battery		
Type	12V , 7.2Ah	12V , 9Ah
Quantity	1	1
Sealed, Maintenance Free	Yes	
Typical Recharge Time	8hrs to 90%	
Management & Communication		
Indicator	LED Panel	
Communication Port	RS232	
Communication	Option : SNMP card / Modbus card / Dry Contact Relay Box	
Physical		
Dimensions	W282 x D110 x H124 mm	
Weight	4.3kg	4.9kg
Shipping Dimensions	W381 x D243 x H231 mm	
Shipping Weight	5.1kg	5.7kg
Alarm		
Overload / Fault	Continuous Beeping	
Battery Mode	Beep every 4 s	
Low Battery	Beep every 0.5s	
Environment		
Operating Humidity	0 – 90% RH at 0 – 40°C (Non-condensing)	
Audible Noise	Less than 40dB	